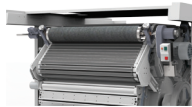




Perfection Through Technology



Card Room Maintenance Machines



Company Profile

A Company created by technocrats Four decades ago, PERFECT continues to be driven by a clear vision for excellence in technology and engineering. This single minded pursuit of uncompromising quality standards and continuous innovation has catapulted PERFECT into the international market, making it the choice source of leading multinationals in the Global Textile Arena. PERFECT'S ability to integrate technology, processes and customer requirements into ingenious solutions has resulted in delivering the machines with highest efficiency at a very economical price.

PERFECT is manufacturing and delivering machines which meets the International Standards of Accuracy and Efficiency. Perfect Machines are well accepted in Europeans Markets which requires CE Certification.

Perfect Equipments Pvt. Ltd. has many times winner of Special Export Award from the most reputed organization like FITEI & Engineering Export Promotion Council.



CONTENT

PRODUCTS	Page
Flat Clipping Machine PFC – 4	04
Flat Clipping Machine PFC – 3	05
Automatic Flat Grinding Machine AFG – 3	06
Flat End Milling Machine FEM – 2	07
Roller Wire Mounting Machine RMM – 1	08
Metallic Wire Mounting Machine MWM	09
Reciprocating Stone Grinder RSG	10
On Card Flat Grinding Roller OCFG – 1	10
Wire Unwinding Machine	11
Butt – Welder	11

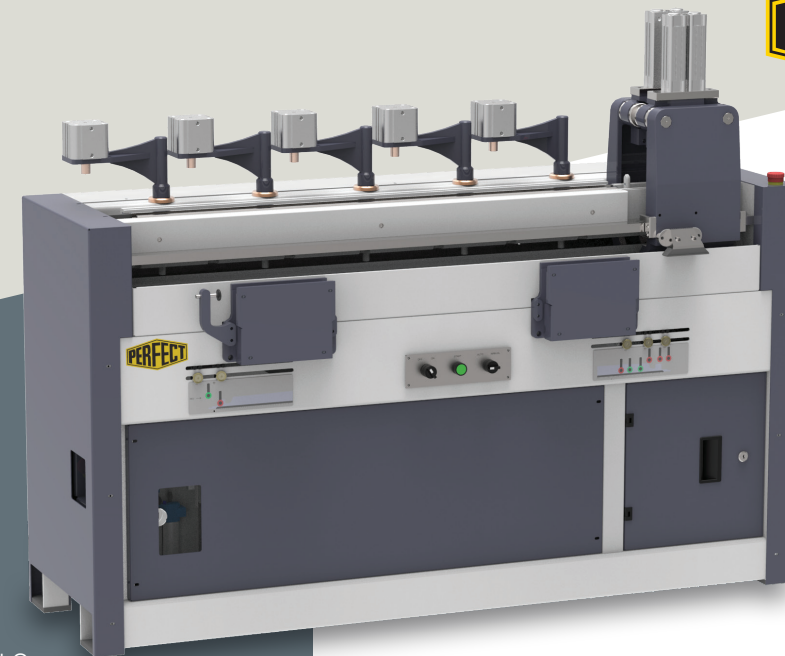
Flat Clipping Machine **PFC – 4**



Optional : Old top tear off attachment for anyone make of flat can be supply with machine PFC-3

- Fully automatic PLC control machine
- No need for manual hammering for clipping at both ends
- Ensuring safety, thanks to safety light curtain
- Quick and easy pre-programmable for different make of card's flats
- Carriage movement guides by LM guide for rigidity
- Top pressing and clipping to the flats simultaneous operation, ensures highest precision of clipping with respect to straightness of the flat bars
- Also available for Rieter C-70 Card flat and Trutzschler TC 11 card flat, (PFC 4 60")
- Power 1.1 kW

Flat Clipping Machine **PFC – 3**



Flat Clipping Machine
PFC-3 40" (37"- 40" Flats)
PFC-3 60" (37"- 60" Flats)

- All Operations controlled by PLC
- Pneumatic cylinders for all actions
- No need for manually clipping the ends of tops
- Power 1.1 kW

Automatic Flat Grinding Machine **AFG – 3**



Seating Plate with
Clamping Device



Control Device



Stone Dressing Device

Automatic Flat Grinding Machine
AFG-3 40" for 37" - 40" Flats
AFG-3 60" for 37" - 60" Flats

- Available in two models for Flat length of 37"~40" & 37"~60"
- Precise grinding of one or three flats simultaneously
- Choice of grinding media - Ceramic roller or Emery fillet
- Centralised lubrication system
- Efficient dust extraction system
- Power 1.87 kW

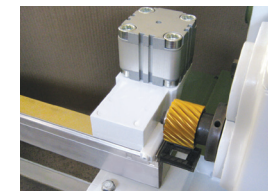
Flat End Milling Machine **FEM – 2**



Control Bed with Dial Indicator



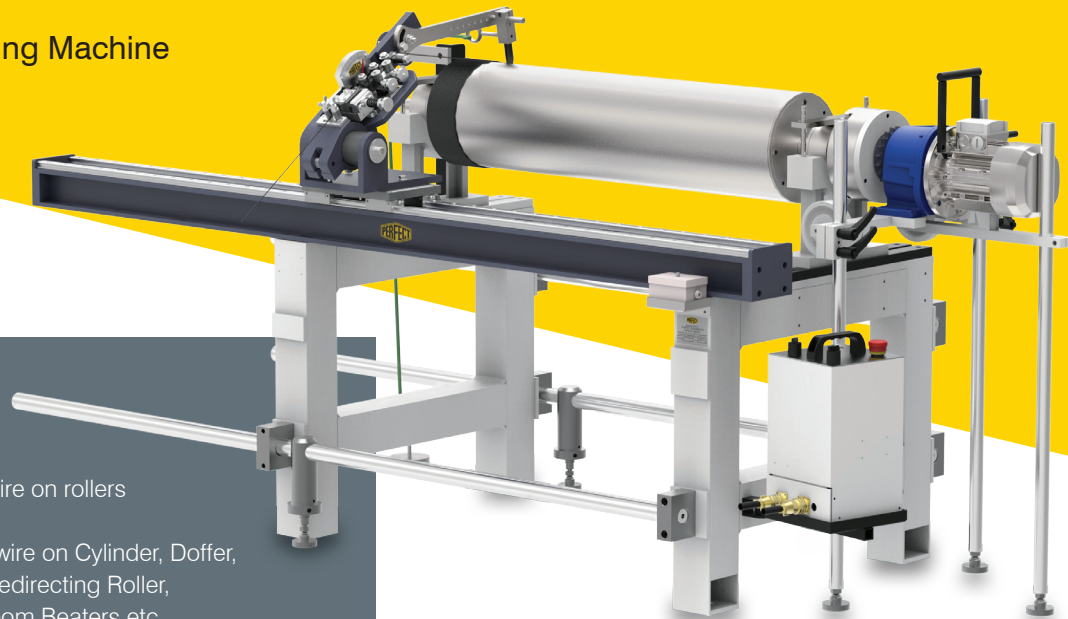
Optional: Pneumatic Clamping System



Milling RIETER-C 60/C-70 Card Flat End

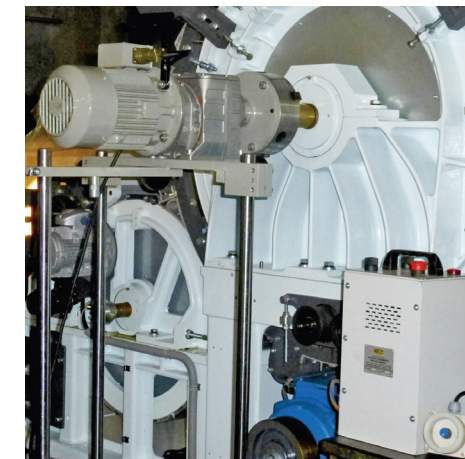
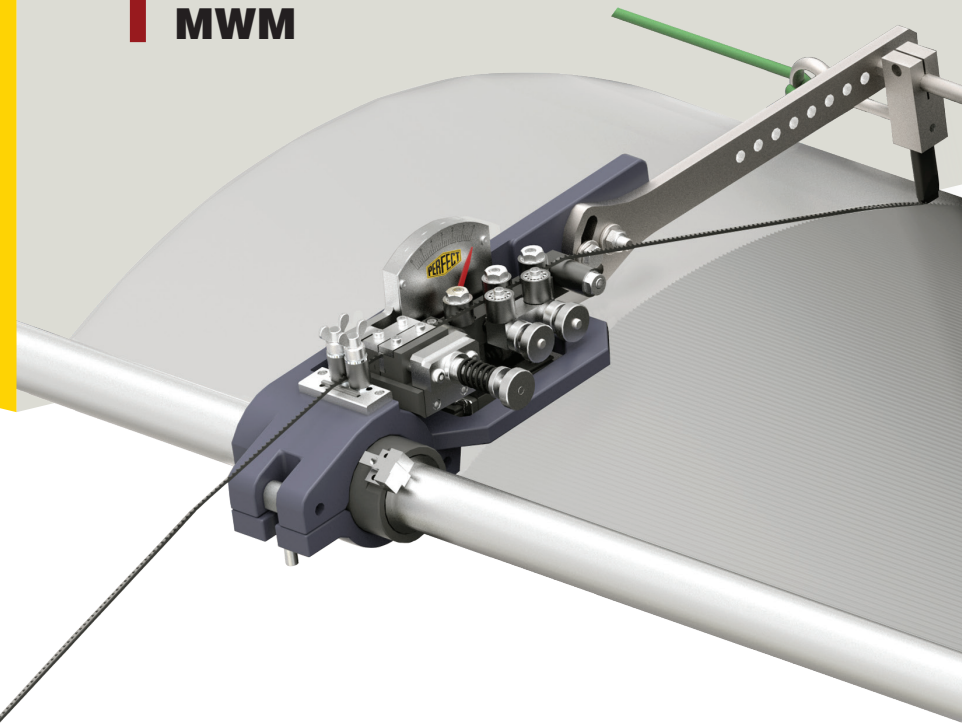
- For Milling worn out Flat Ends to restore original accuracy of Heel & Toe
- Standard Machine for Flats up to 40" Special version for up to 60" Flats
- Novel way to fix Cam for accurate and easy Heel & toe milling
- Control bed with Supports & Dial Indicator included is standard Supply
- Power 1.1 kW

Roller Wire Mounting Machine **RMM - 1**



- Suitable for mounting wire on rollers up to 1600 mm length
- Can be used to mount wire on Cylinder, Doffer, Licker in, Feed Roller, Redirecting Roller, Stripping Fillet, Blow Room Beaters etc.
- Traversing assembly with bearing guiding unit & wire Tension Indicator
- Drive unit driven by A.C. geared motor, Speed Control by Variable frequency Drive
- Optional Grinding attachment
- Power 1.1 kW

Metallic Wire Mounting Machine **MWM**



Drive of Card Cylinder

Reciprocating Stone Grinder **RSG**



- Having Liner Drive main unit
- A.C. Variable Drive
- Grinding Stone is on Gravity Force
- Bracket for holding on any one make of card
- Extra bracket for other make of card will be at extra cost
- Also available for TC 11 & Rieter C-70 Cards
- Power 0.18 kW

On Card Flat Grinding Roller **OCFG – 1**



OCFG 40 for 40" Card
OCFG 50 for Trutzschler TC 11 Card
OCFG 60 for 60" Rieter C-60 / C-70 Card

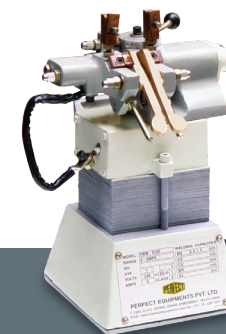
- Saves time - tops can be ground on card itself
- Grinding roller driven by 0.75 kW Power

Wire Unwinding Machine



- For unwinding of used wire from cylinder and doffer
- Power 0.75 kW

Butt – Welder



- 1.5 kW for card wires
- 3 kW for card wires & all heavy duty wires





PERFECT EQUIPMENTS PVT. LTD.

Plot No. 554, Main Road, G.I.D.C. Estate,
Kathwada, Ahmedabad - 382430, India.

☎ +91 79 22871516, 22871615, 22890895

☎ +91 79 22870307

✉ sales@perfectequipments.com

🌐 www.perfectequipments.com



Manufacturing Facilities

The information contained within this document is accurate as possible, due to continuous development PERFECT EQUIPMENTS PVT. LTD. reserve the right to alter or amend any of the specifications or data as required. Any pictures or illustrations provided are for guidance only.