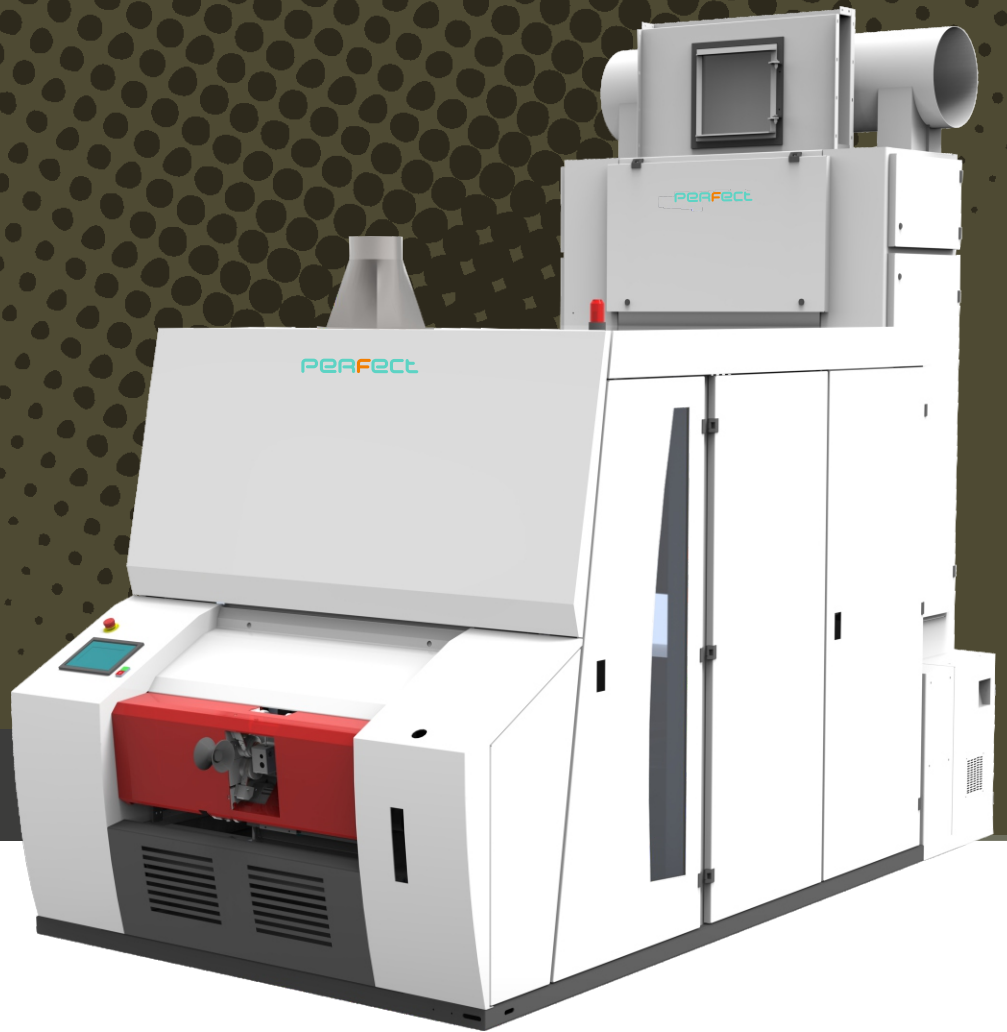
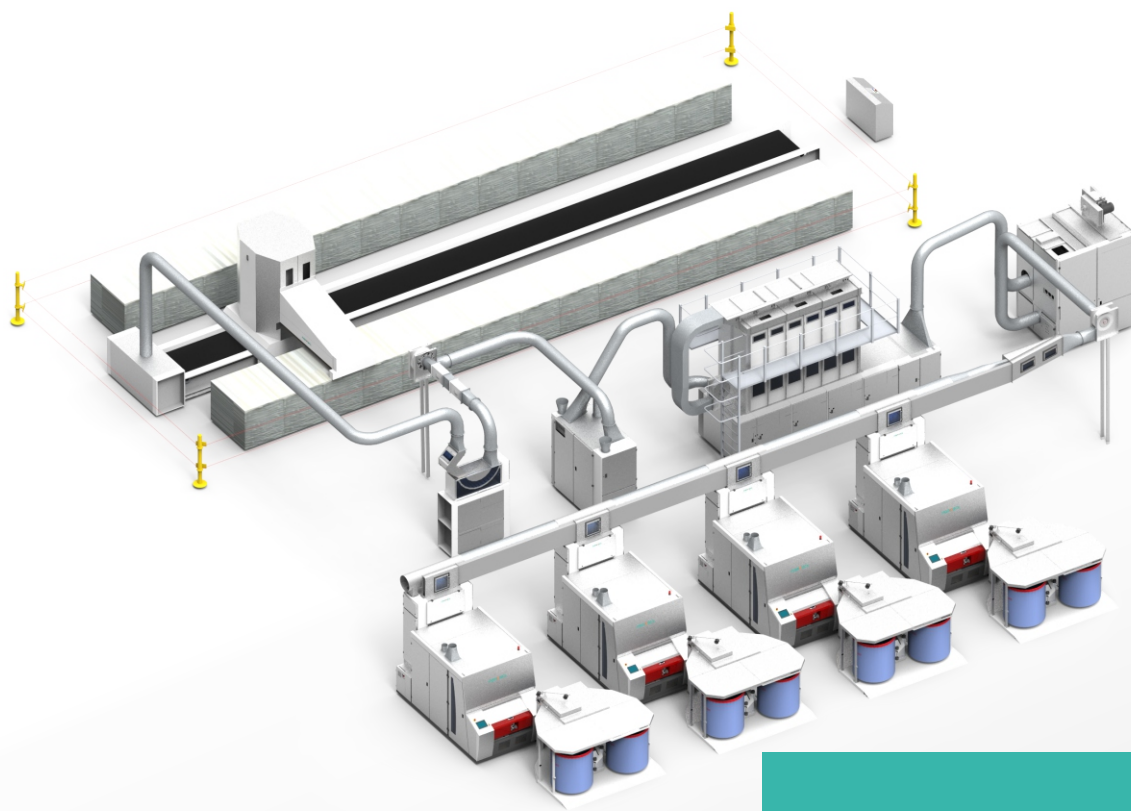


PERFECT Card 1000

for Carding
PERFORMANCE,
PRODUCTIVITY and
EFFICIENCY



PERFECT
for Affordable Technology



“Well Carded Is
Well Spun”

at PERFECT we Combine
old Wisdom with Modern
Technology.



YOUR SEARCH HAS ENDED.

PERFECT card 1000 Series

is result of experience gained from manufacturing & installation of more than 800 cards in about 110 textile plants, processing various kinds of raw material, meeting our customer's expectations for **Sliver Quality, Productivity & Efficiency**.

PERFECT being market leader in Card Maintenance equipments has accumulated knowledge of **over 35 years in working with all brands of cards**. Close co-operation with many Textile Plants & guidance from Industry experts and understanding the criticality of close manufacturing tolerances to attain precise settings between various carding elements, were the **guiding principles for the new 1000 Series card**.

Our satisfied customers encouraged us to produce a card of contemporary design & features which meets their increased expectations.

We present to you PERFECT card 1000 Series which can match all available brands of cards for Carding PERFORMANCE, PRODUCTIVITY and EFFICIENCY and yet is available at AFFORDABLE price.

Perfect card 1000 series is value for money & more.



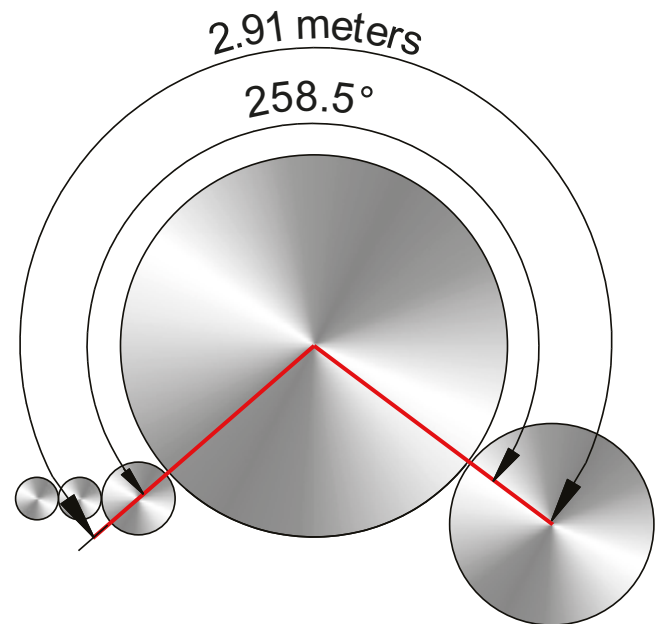
Large Carding area for **HIGH QUALITY** Carding

Raised cylinder allows Perfect card to have Largest Carding area of 2.91 sq.mt.

37 flats in working position above cylinder. Combined with 6 point setting for accurate gap between cylinder & Flats ensure perfect carding.

Pre Carding Stationary Flats for pre-opening allowing more effective carding action between Cylinder & Flats. Post carding Stationary flats for cleaner sliver. Both are equipped with mote knife & Suction arrangement to effectively remove trash & dust at the point they are released.

All combine to give high Fibre individualization, Trash & Nep removal. Good card sliver quality is equal to good yarn.

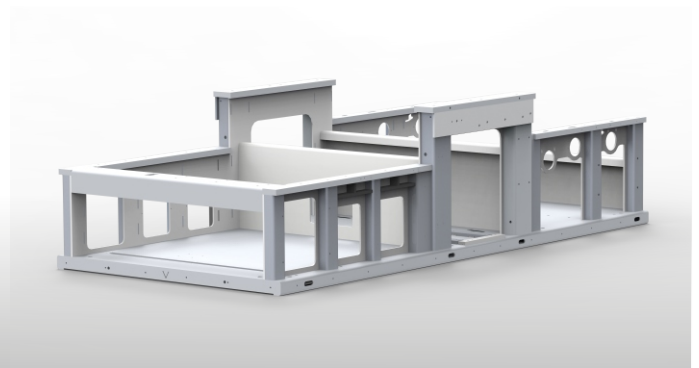


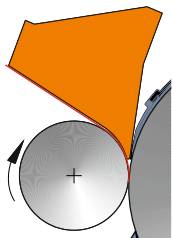
Robust Construction

Carding machine has large moving parts, rotating at high speed with very close settings. It is imperative that the machine structure to be strong to ensure to withstand such forces. Close settings demand very low vibration levels. Machine structure constructed out of rigid steel sheets.

Cylinder side frame made from high grade casting, reinforced with thick strengthening ribs.

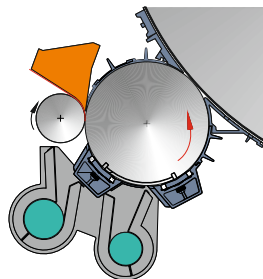
Cylinder & Doffer manufactured from Steel plate reinforced with circular support plates at two places





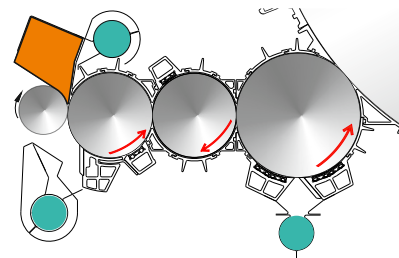
"Invertfeed" system

Invertfeed system ensures that the fibre tufts even though firmly held, are gently exposed to the Licker in action, thereby avoiding harsh action & possibility of fibre damage.



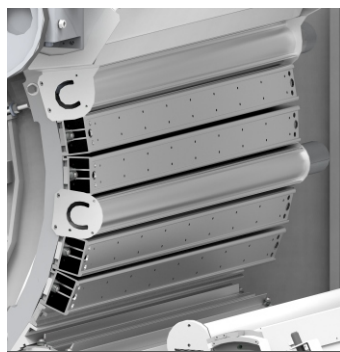
Licker in Configuration

Standard specification includes Single licker in. Working in conjunction with mote knife & combing segments ensure that maximum trash is ejected but with minimum loss of good fibres. Mote Knife can be set quickly & accurately in relation to the material being processed.



Triple Licker in (Option): This is especially useful when processing short staple cotton or trashy cotton, example for OE spinning. Triple Licker in system gives gradual opening of fibres & prepares fibre for intensive opening between Cylinder & Flats.

PRE & POST Carding Area

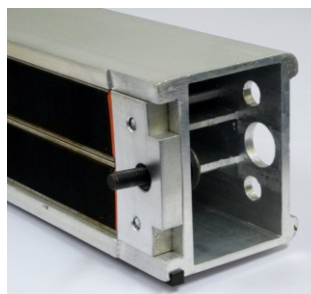


Pre - Carding Zone. 8 nos fixed flats with 2 mote knives with suction

Pre Carding Stationary Flats:

Possible to install maximum of 8 Stationary flats with maximum of two units of mote knife & Suction. Actual number of stationary flats & their clothing depends on the material to be processed. Stationary flats help to

open out the fibre tufts & prepare them for intensive processing within carding zone of cylinder & Flats. Mote knife remove the trash so that cleaner material is feed to the main carding zone. Attached suction carries away the trash & dust released.



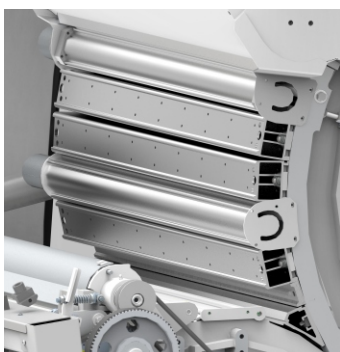
Twin Flats Module

Available with Different Types of Clothing



Cover Module

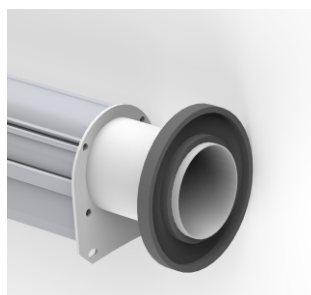
High Precision & Smooth Surface Cover to Control Air Path, In Absent of Flats Module



Post - Carding Zone. 5 nos fixed flats with 2 mote knives with suction

Post Carding Stationary Flats:

Possible to installed maximum of 5 stationary flats along with two units of mote knife & Suction. Post carding flats ensure cleaner sliver & higher fibre parallelisation. Actual number again depends on the material being process.

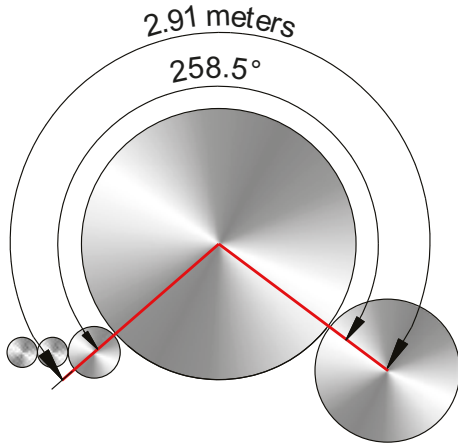


Mote Knife with Suction Hood

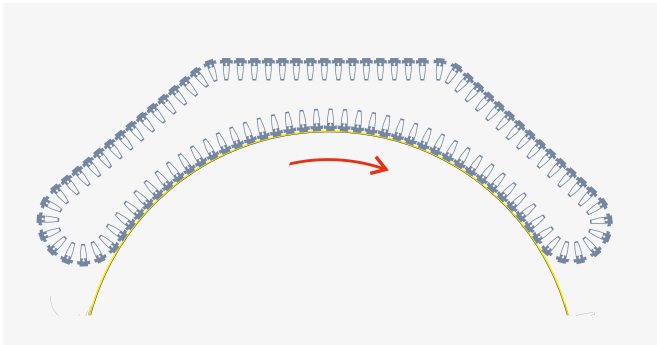
To Extract Trace, Dust & Short Fibres in Pre & Post Carding Area & Mote Knife to Remove Impurities



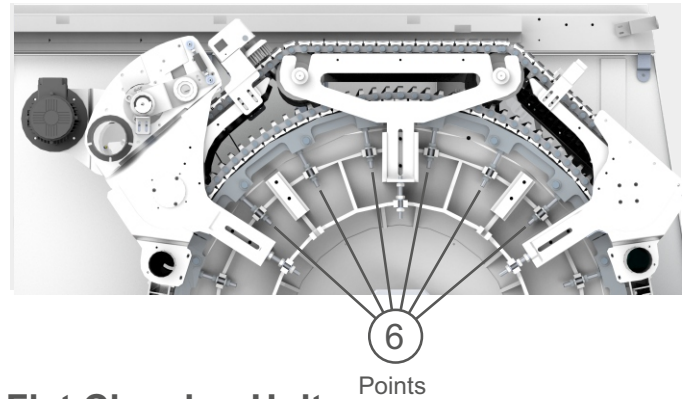
TECHNOLOGY



Adjustable Flat Speed For Optimum Performance



6 Points Flats settings for precise setting between cylinder to flats.

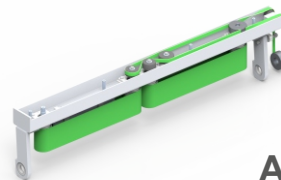
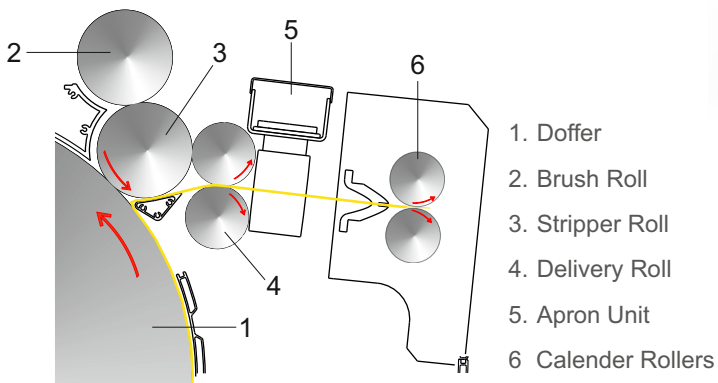


Flat Cleaning Unit



New Flat Cleaning Device For Efficient Cleaning of Flat Tops Cover with Smooth Surface Aluminium Profiles

Web Collection & Sliver formations

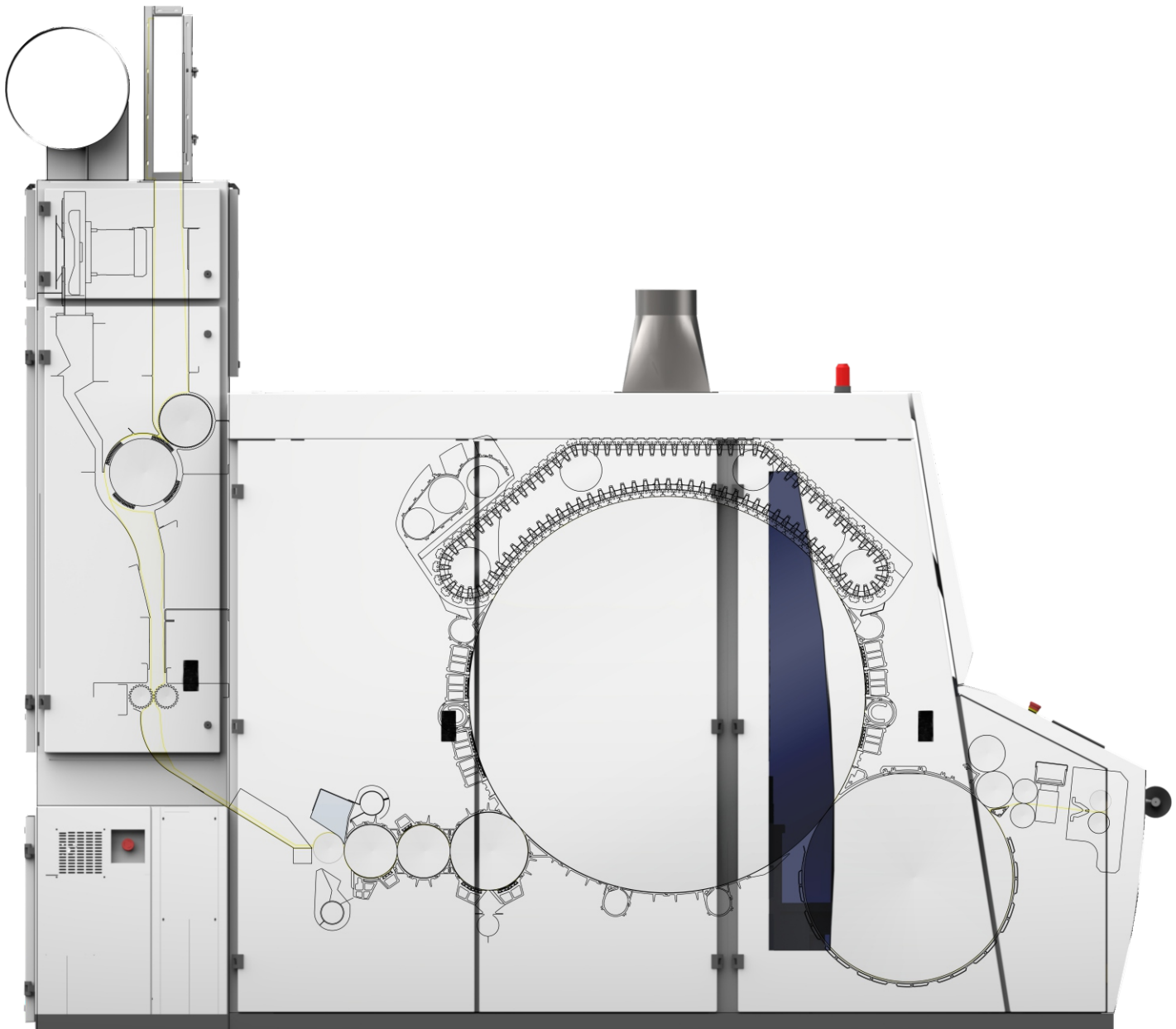


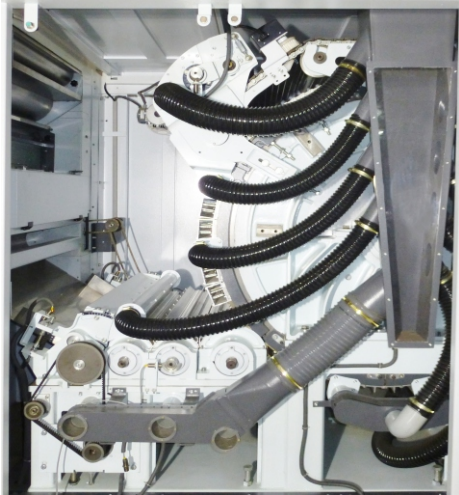
Apron Doffing system

Fibre web delivered from the doffer is gently collected by two aprons without disturbing the fibres. The collected web emerges as a loose formed sliver which is guided through a highly sensitive volume measuring funnel (For input to Auto leveller) & calendar roller arrangement. Aprons are driven by high quality flat belts to avoid any slippage & thereby affecting the apron speed.

Perfect Card meets all your expectations of Production, Quality & Productivity

- Largest Carding Area – 2.91 Square meters
- 37 flats in working Position
- Option of Single or Triple Licker in to suit material to be processed
- Pre Carding Stationary flats with Mote knife & Suction Hood arrangement
- Post Carding Stationary flats
- Six point flat gauging system
- Continuous Waste removal system
- Big Display
- Mid Term & long Term Autoleveller
- Option of Rotary or Independent Coiler & Can Changer.





Continuous Centralised Waste Collection System

Perfect card as a standard is supplied with continuous centralised waste collection system. Waste fibres, trash & dust laden air is collected from the source through wire reinforced flexible plastic pipes. All pipes are connected to central ducts, which is connected to customer provided filtration system. The Card is always maintained in clean condition, no waste accumulation anywhere.

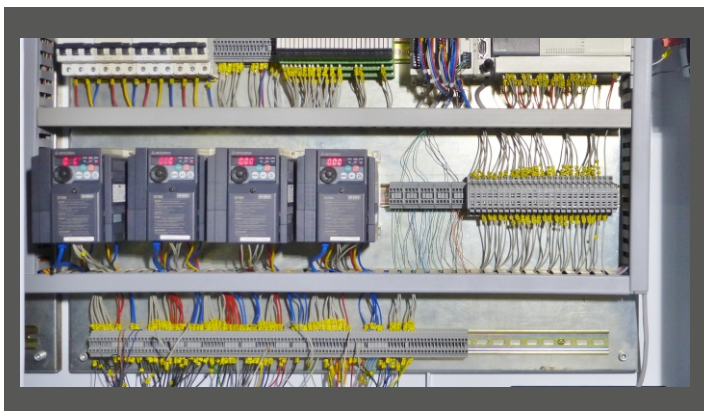
In absence of Filtration system, card as an option can be provided with individual waste collection fan & filter. However such system is not cost & power efficient.

Drive System

7.5 KW motor drives Cylinder & Licker-in through Flat Belt with tensioning arrangement. Speed change by changing the Pulley.

For triple Licker-in separate drive motor arrangement. Speed change by changing the motor Pulley. Doffer & web take off drive by individual motor. Speed regulation by Frequency control drive. Feed roller drive by Servo motor with Servo drive for Price control of feed roller speed control.

Control Panel



Card PLC



Sold State Maintenance Free PLC Controller

Card Servo Motor



Maintenance free Digitalise Controller Servo Motor - Without Carbon Brush & Fan Totally Enclosed Dust Free

Card Drive



Frequency Variable Drives for Various Rotation Parts



Can changer

Controls at your Finger tips

A touch LCD screen puts all the important card information at your finger tips. You can vary the Production rate, See all performance data, Sliver CV%, etc on the screen.

Display of delivery speed, feed roller, cylinder, flat, doffer, feed roller of chute feed rpm.

Display of shift wise Production, run hours, Sliver CV %.

Allows input to change doffer rpm, can content, slow speed at can change, slow doffer speed for sliver piecing.

All drive through Timing Belts for noiseless & smooth operation.

Various can size possible - 600, 900 & 1000 mm.

Sliver sensor to stop card in case of sliver breakage.

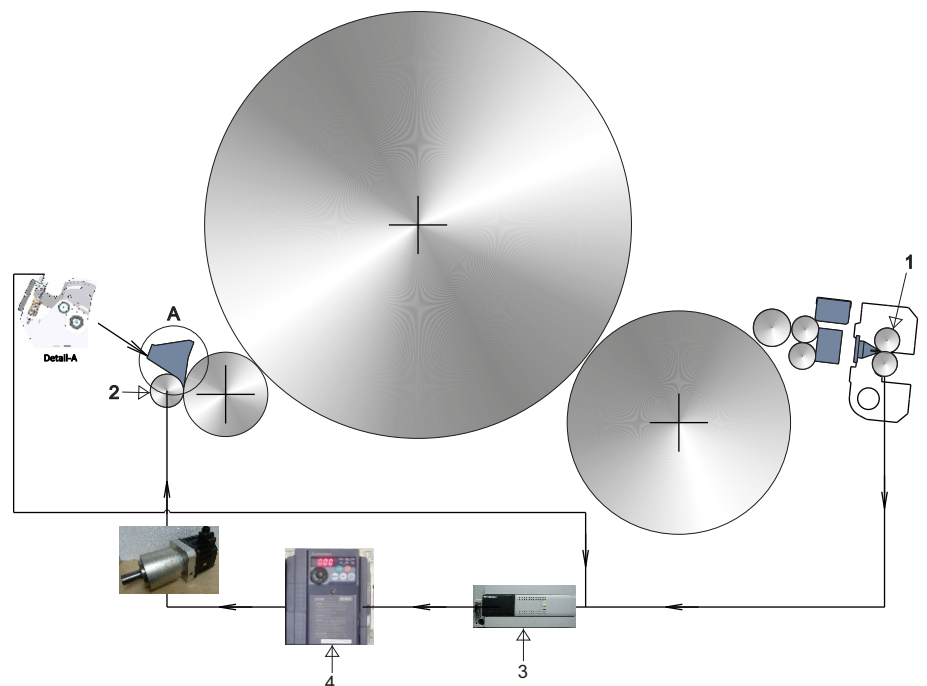
Sealed life time lubricated bearing for coiler & can plate.

Option:

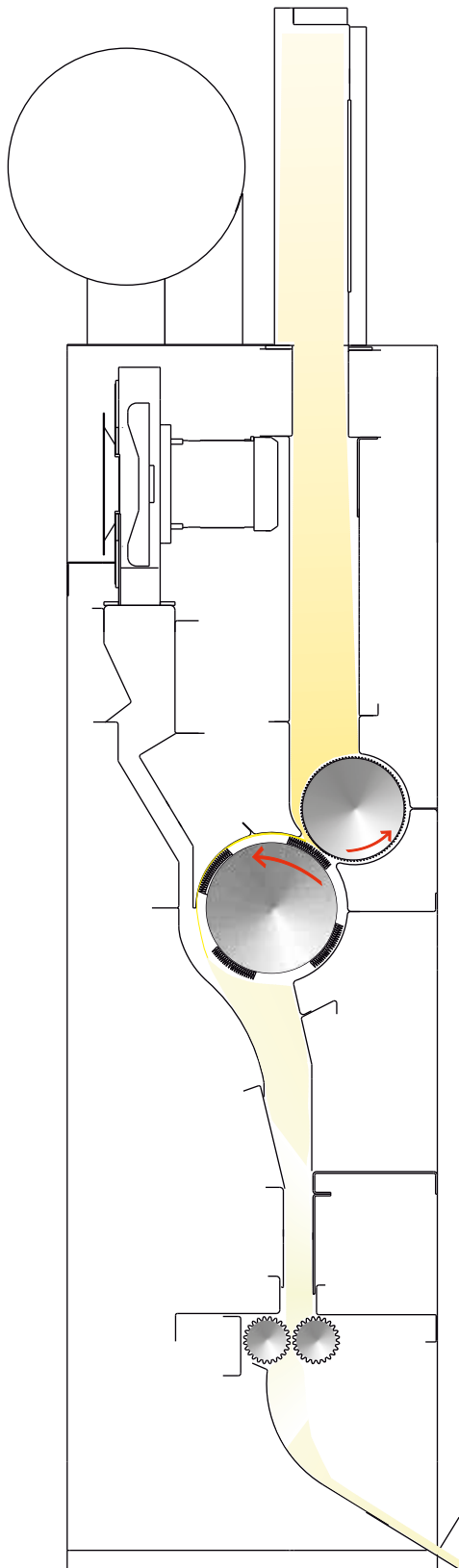
Linear type Can Changer.

Autoleveller

Perfect card is equipped with Medium & long term auto leveller, producing even sliver. The sliver is continuously monitored for any variation in evenness of the sliver in addition to sensing of feed lap thickness at the feed. The variation in the material are sensed & corrected to the required level automatically & digitally using Micro Processor in closed loop.



1. Deliver roll with Measuring Sensor to Measure Delivered Sliver.
2. Measuring Sensors at Feed Roller to Measure the Feed Thickness.
3. PLC to Process Inputs & Give Command to Frequency Drive.
4. Frequency Drive to Control Feed Roller Speed.



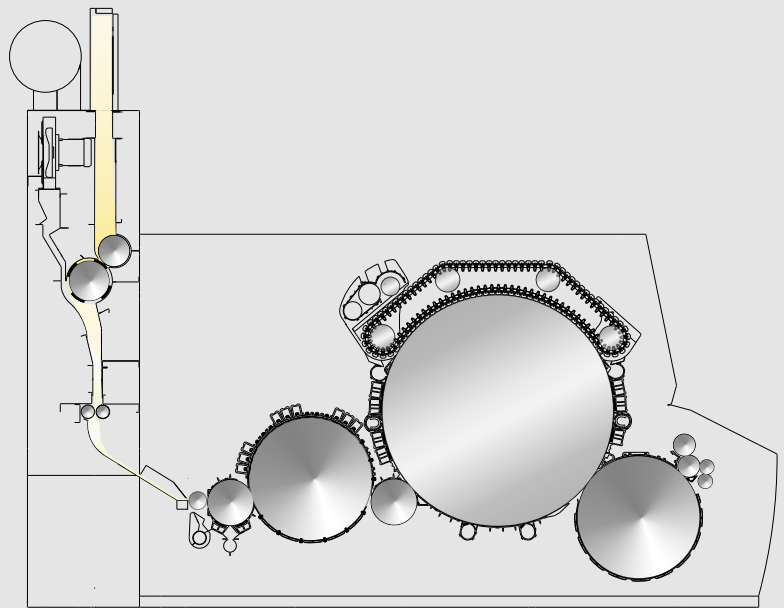
Chute feed System

Perfect 'Uniflow' chute feed system is specially designed & developed for processing all kinds of material.

A simple easy to maintain Chute Feed System with variable speed drive ensure uniform feeding of cotton tufts from previous machine.

This feeding system coupled with auto levelling system guarantees a good C.V. % of Sliver.

Model : 1275 BSD for Regenerated fibres



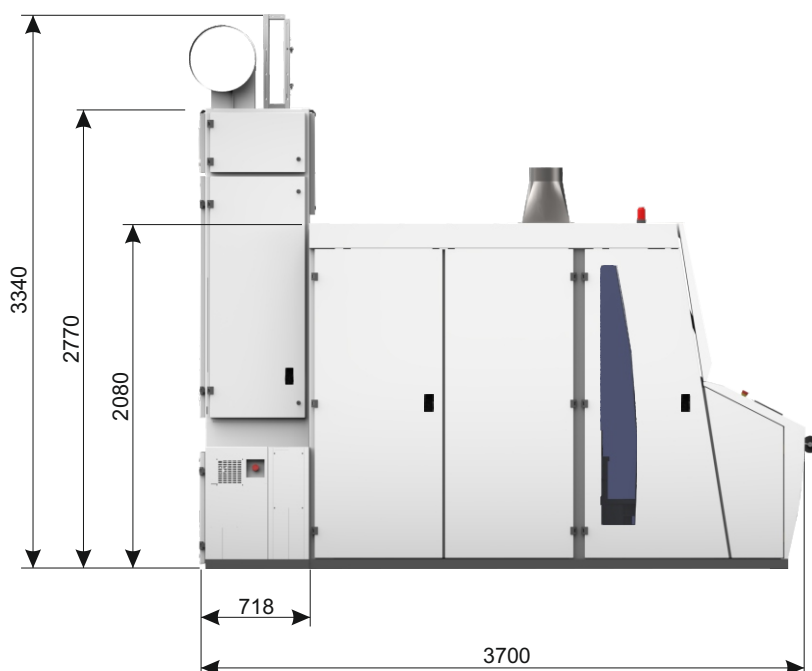
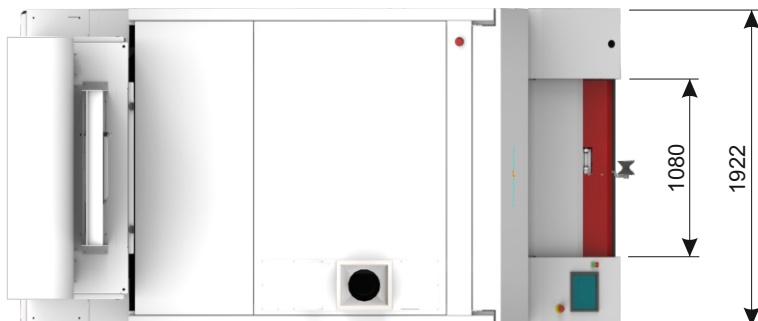
Model: 1275 Card for Absorbent Cotton

(Medical products)

Web output upto 40 GSM



SPECIFICATION



Technical Specification

| | | | | Single Licker-in | Triple Licker-in |
|---------------------------|-------|-------------|------------------------------|------------------|------------------|
| Working Width | (mm) | 1000 | Speed | (mtrs/min) | 200 |
| Feed Roll Diameter | (mm) | 100 | Production rate Max* | (kg/hr) | 120 |
| 1st Licker - in Diameter | (mm) | 172.5 | Installed Power - Card | (kw) | 10.80 |
| 2nd Licker - in Diameter | (mm) | 172.5 | Installed Power - Chute Feed | (kw) | 2.40 |
| 3rd Licker - in Diameter | (mm) | 253 | Suction Continuous | (m³/h) | 3700 (-750 Pa) |
| Licker - in Speed | (rpm) | 900 to 1810 | Compressed Air | (bar) | 6 |
| Cylinder Diameter | (mm) | 1290 | Air Consumption | (L/m) | 0.41 |
| Cylinder Speed | (rpm) | 550 to 600 | Net Weight | (Kg) (approx) | 6600 |
| Doffer Diameter | (mm) | 680 | | | 6854 |
| Doffer Speed | (rpm) | 0 to 90 | | | |
| Total No. of Flats | | 98 | | | |
| Flats in working position | | 37 | | | |

*Depends on raw material and department condition.

Data and diagrams in this brochure are given without obligation. We retain the right to make any changes we consider necessary to the equipment described herein at any time without special notice.

Manufacturing Facilities



PERFECT

PERFECT ENGINEERING CORPORATION

Plot No. 509, G.I.D.C. Estate, Odhav,
Ahmedabad 382 415, INDIA

Phone.: +91 79 22871516, 22871615, 22890895,
Fax : +91 79 22870307.

Email : sales@perfectequipments.com
Web: www.perfectequipments.com

The Information contained within this document is accurate as possible. However, due to continuous development, PERFECT ENGINEERING CORPORATION reserves the right to alter or amend any of the specifications or data as required. Any pictures or illustrations provided are for guidance only.